

4T80E SPACER PLATE TO CASE COVER GASKET 1993-UP

General Motors has altered the hydraulics of the 4T80E slightly for all models from 1993-up. The “hatchet” passage for line pressure has been modified by removing the “handle”. With this change the gasket now matches the separator plate and does not allow line pressure to be orificed into the reverse clutch passage. See the accompanying illustration.

The revised gasket has a white ink stripe for additional identification.

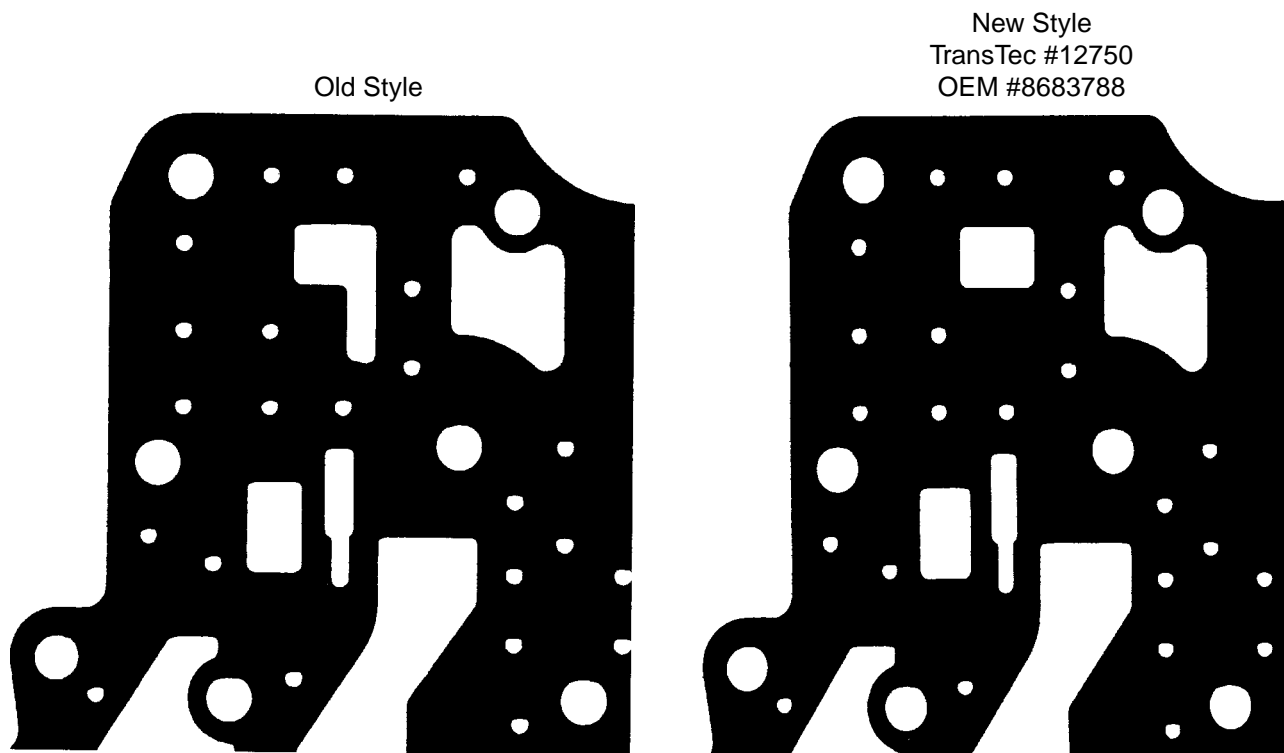
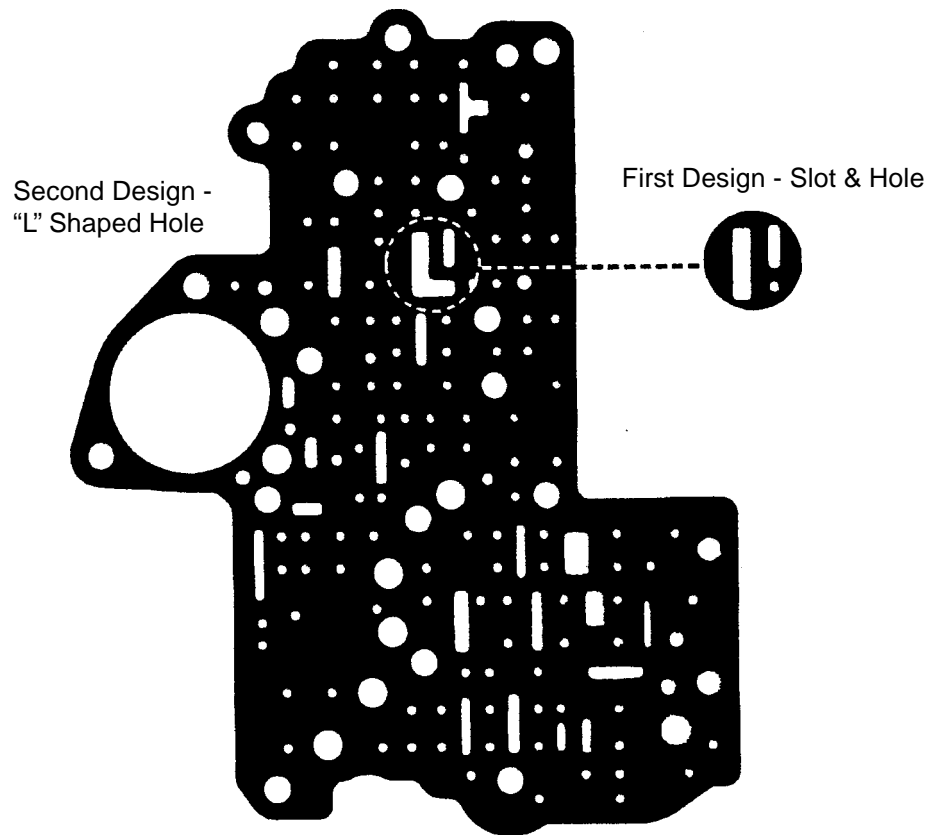


Illustration for reference only. The second design gasket supercedes the first design, which is no longer available. The new (second) design gasket is in all TransTec gasket/seal kits and overhaul kits.

UPPER VALVE BODY GASKET

In 1994, GM changed the gasket for the upper valve body-to-separator plate. The first design used a slot and a hole in the area shown below. The second design went to an "L" shaped hole in this area.



The second design gaskets supercedes the first design, which is no longer available. The new (second) design gaskets are in all TransTec gasket/seal kits and overhaul kits.

The secondary pump-to-plate gasket remain unchanged.

TRANSFER PLATES

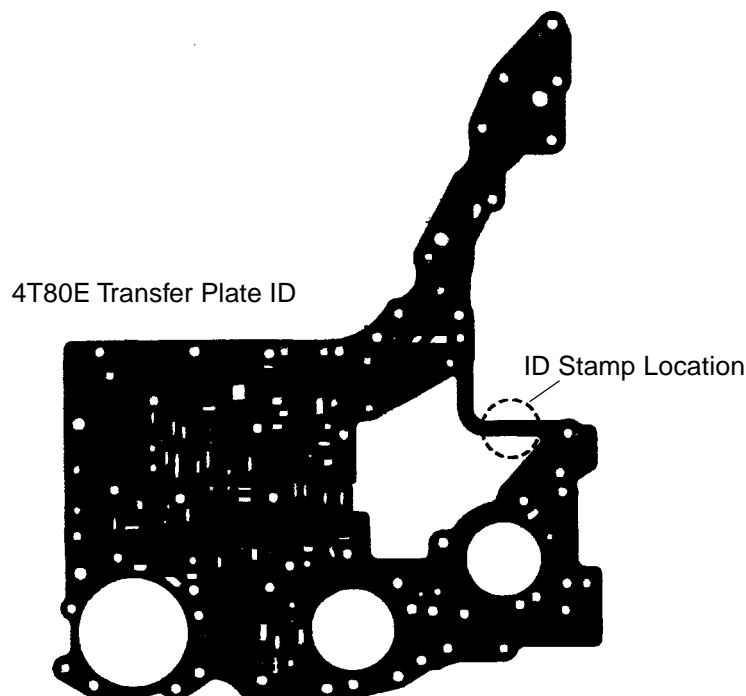
There has been a lot of confusion over the transfer plates for the 4T80E as far as application, OE and aftermarket numbers, ID stamp numbers, etc. The following table specifies the applications for these plates, which are all included in TransTec overhaul kit #2289, with the exception of the 2003-up plate, #10095, which must be ordered separately.

Model Year	OE #	Transtec #	ID Stamp	Replaces ID Stamp	Final Drive Ratio	RPO Code
1993	8683184	10017	NONE	0435	3.11 & 3.71	FV3 & FV4
1994	24213957	10045	3957	5347	3.11	FV3
1994	24201193	10020	1193		3.71	FV4
1995-02	24213957	10045	3957	5347	3.11, 3.71, 3.48	FV3, FV4, FQ2
2003-UP	24225286	*10095	5286		3.11 & 3.71	FV3 & FV4

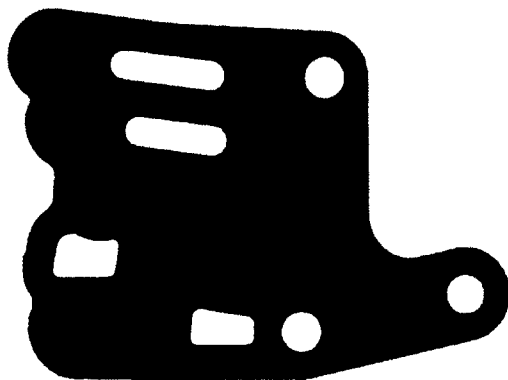
* Not In Kits

FINAL DRIVE RATIO I.D.

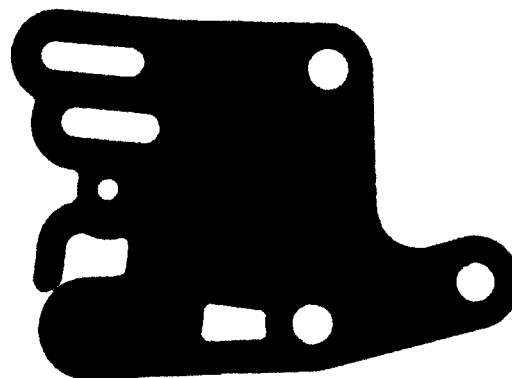
RPO Code	Final Drive Ratio	Sun Gear	Pinion Gear	Ring Gear
FV3	3.11 : 1	54 Teeth	30 Teeth	114 Teeth
FV4	3.71 : 1	42 Teeth	36 Teeth	114 Teeth
FQ2	3.48 : 1	46 Teeth	34 Teeth	114 Teeth



SPROCKET SUPPORT TO CASE COVER GASKET



1993-94
TransTec #10019
OEM #8683149



1995-Up
TransTec #10021
OEM #24201535

CAUTION: Care must be taken to ensure the correct sprocket support to case cover gasket is installed. See the above illustration for positive identification.